

**Mental Health Transformation
State Incentive Grant
(MHT SIG)**

A Brief Overview

July 21, 2008

Rupert Goetz, MD – Director
Sharlene Chun-Lum – Chief Operations Officer

The Vision

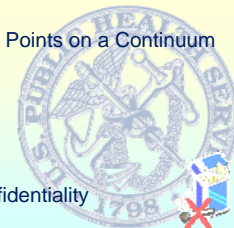
Hawaii's transformed mental health system will focus on prevention, effective intervention and recovery across the life span, providing coordinated, culturally sensitive services state wide that are sustainable and consumer-driven

The Values

- Inclusive of consumer input and direction**
- Respectful of cultural and community protocols**
- Building capacity of consumers and families as well as providers to ensure sustainability, and**
- Encouraging collaboration and innovation.**

MH: Surgeon General's Report

- Congress Declares '90's "Decade of the Brain"
- Mental Health: Report of the Surgeon General
 - Published in 1999
 - A Public Health Approach
 - Mental Disorders are Disabling
 - Mental Health and Mental Illness: Points on a Continuum
 - Mind and Body are Inseparable
 - Chapters on:
 - Mental Health and Mental Illness
 - Children, Adults, Older Adults
 - Organization and Financing, Confidentiality



New Freedom Commission (2002)

- **In it's Interim Report, the Commission found:**
 - Fragmentation and gaps in care for children
 - Fragmentation and gaps in care for adults with serious mental illness
 - High unemployment and disability for people with serious mental illness
 - Lack of care for older adults with mental illness
 - Lack of national priority for mental health and suicide prevention

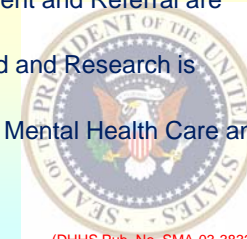


NFC Goals:

- MH is Essential to Overall Health
- MH is Consumer and Family Driven
- Disparities in MH Services are Eliminated
- Early MH Screening, Assessment and Referral are Common Practice
- Excellent MH Care is Delivered and Research is Accelerated
- Technology is Used to Access Mental Health Care and Information

—New Freedom Commission
Achieving the Promise

(DHHS Pub. No. SMA-03-3832)

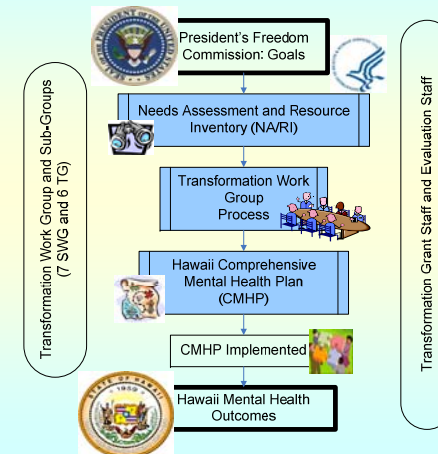


An Opportunity: MHT SIG

- 44 Governors applied; 9 States got grant
- \$10.95M over five years
- To be used for **Infrastructure**
 - This is: Needs assessment; Strategic planning; Organizational change; Network development; Policies; Interagency and funding coordination; Quality assurance; Workforce development; Communication activities; and Sustainability
 - This is not: Services and Programs



MHT SIG Process



Needs Assessment and Resource Inventory (NA/RI)

- Identifies **system strengths** and **resources** to provide mental health services
 - Prior reports, efforts and plans; catalogue and chart funding streams
- Identifies **gaps** in mental health and allied services
 - Focus Groups; Key Stakeholder Interviews; data
- Next, will follow Outcomes
 - Including GPRA Measures
 - (Government Performance Results Act)



Evaluation Team (MHSRET)

Sub-Working Groups (SWG)

1. Promoting & Understanding Mental Health
2. Consumers & Families as Drivers
3. Early Intervention
4. Accelerating & Expanding Quality Services
5. High Tech & Local Touch
6. Workforce & Community Supports
7. Evaluation

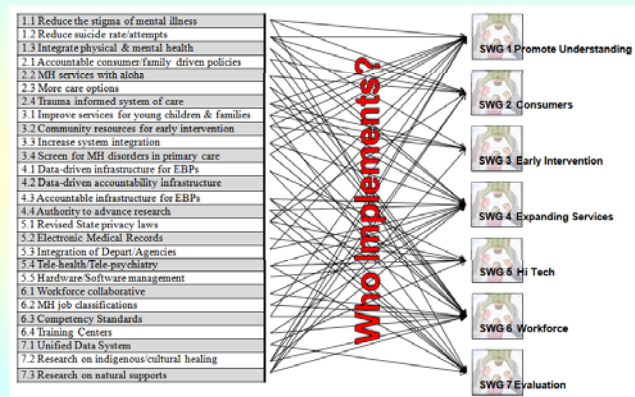
Cross-cutting Themes in All Groups:

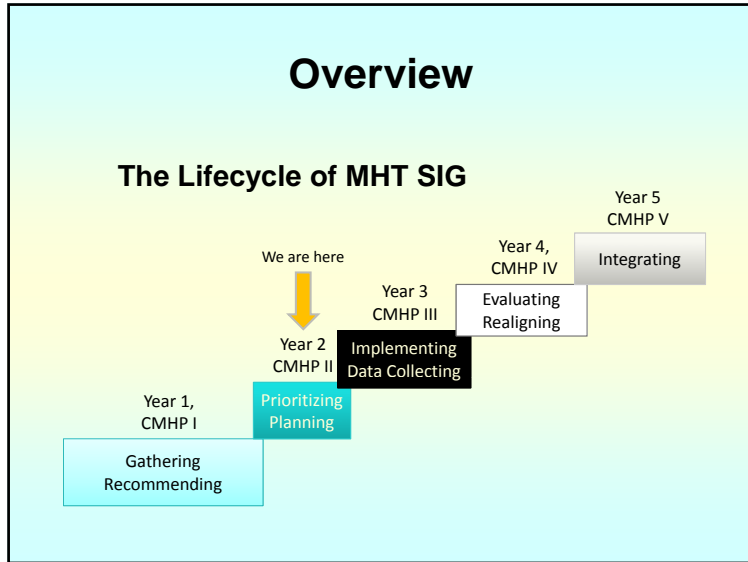
- Access (Cultural and geographic)
- Evaluation (Continuous Improvement & Sustainability)

What is Transformation?

- **Federal Perspective** (Grantors):
 - Consumers and families are significantly involved
 - Services are consumer and family centered
 - Care focused on resilience, coping and recovery
 - Recovery is embedded in everything
 - Evidence-based practices are implemented
- **Hawaii Perspective** (Participants so far):
 - Increased consumer and family-driven decisions
 - Increased integrated, coordinated, person-centered care
 - Shift emphasis from high-end care to prevention
- **Both are looking for “bold change”**

SWG Recommendations





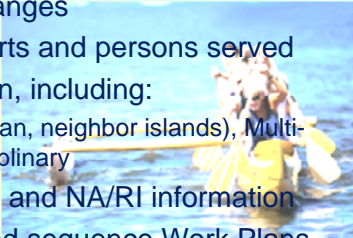
- ## NA/RI Information on Geriatrics
- 4.5 Special Considerations: (Needs)
 - Policies: Address disparities
 - Practices/Services: Housing for special needs; LT bed capacity + alternatives; expanded services; early intervention; accessibility gaps; specialty trained professionals; basic rights; cultural sensitivity; public awareness
 - Workforce Training: Paraprofessionals; emphasize geriatrics; physician competency
 - Organizational Collaboration: Collaborations; Elder abuse
 - Consumer/Family Involvement: Peer providers; supportive services
 - Complete NA/RI can be found at:
 - <http://www.mhsret.org/nari/>
 - Geriatric Considerations pp 199 - 204

- ## Task Groups (TG)
1. Educating the Public
 2. Systems Integration
 3. Consumer and Professional Workforce Development and Training
 4. Research, Evaluation and Dissemination
 5. Financing and Sustainability
 6. Criminal Justice

- ## Strength in Diversity
- 
- Consumers
 - Family Members
 - State and County
 - Agencies
 - Providers
 - Advocates
 - Youth

Year 2 Task Groups

- Focus on making changes
- Include content experts and persons served
- Assure representation, including:
 - Geographic (rural/urban, neighbor islands), Multi-cultural and interdisciplinary
- Review SWG reports and NA/RI information
- Develop, prioritize and sequence Work Plans
- Each Work Plan is led by two TG members
 - Ad-hoc members participate as needed
- Expect one Project started before September



Mini Grant Program

- Intended to support local transformation efforts
- Will include scheduled grant-writing workshops
- Public announcement expected in July, with selection process and criteria
 - Application will be open to individuals, agencies and organizations
 - Award criteria will include how much the project supports recommendations made in the CMHP
 - Innovative collaborations, such as local public-private partnerships are encouraged
- Award size will depend on applications received and funds available



MHT SIG Annual Update

- When:** Wednesday, July 23rd (8:30 am -3:00 pm)
- Where:** Pearl City Cultural Center
(near the top of Waimano Home Road)
- Why:** Report progress, look ahead
- Guests:** Tonier Cain – Consumer Advocate
“Trauma and Recovery”
- Panel:** Intergenerational Trauma; Prevention;
Early intervention; Recovery across the
life span

Questions? Contact Information

- Rupert Goetz MD:
 - Phone: (808) 453-6614
 - Email: rupert.goetz@doh.hawaii.gov
- Sharlene Chun-Lum:
 - Phone: (808) 453-6644
 - Email: sharlene.chun-lum@doh.hawaii.gov
- Transformation:
 - Phone: (808) 453-6649
 - Email: transformation@doh.hawaii.gov
- Temporary Web Page:
 - Email: <http://amhd.org/MHTTransformationGrant/>